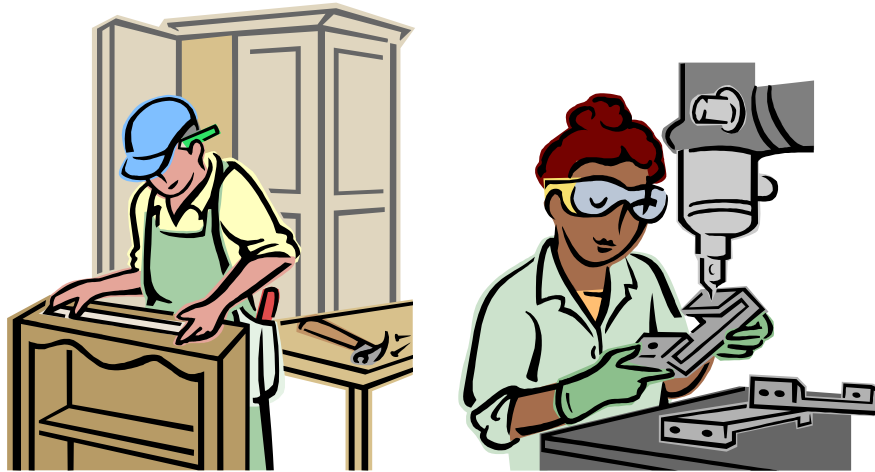


Do you have a criminal record and need help?
You may qualify for the

Community Success Initiative (CSI) Program Reentry Support Program



Contact our CSI Representative at (919) 688-6503

Representatives Available: Friday 10am-1pm

(Drop-ins are welcome)

(Covering Orange County)

Sponsored by:

Community Success Initiative

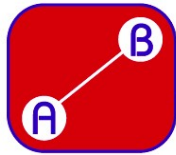
A JobLink Partner

Orange County NC Skills Development Center

503 W. Franklin Street, Chapel Hill, NC 27516

(919) 969-3032

www.communitysuccess.org



community success initiative

HELPING INDIVIDUALS & COMMUNITIES MOVE FROM WHERE THEY ARE TO WHERE THEY WANT TO BE

Reentry Orientation

1. Initial Interview
2. Orientation sessions

Personal Development

3. 15 Principles of Personal Growth and Development (ongoing)
4. Goal Setting
5. Cognitive Behavioral Training and Workshops
6. Spirituality
7. Mindfulness

Job Education

- Job Readiness Training
- Resume Prep
- Interviewing Techniques
- Career Assessment Tools (ex. Work Keys)
- How to Use Job Link Center
- Employer Incentives, Bonding, Work Tax Credit (WOTC)
- Dressing for Success Classes
- Entrepreneurship Workshops

Education

- GED
- Community College Partnership
- St. Augustine College Gateway Program
- Shaw University Cape Program
- Career Readiness Certification

Housing

- Ready to Rent Certification
- Homebuyer Workshop
- Transitional Housing

Human Services

- Family Support (Fatherhood Initiatives, Therapy Group/Individual Sessions)
- Anger Management
- Medical Substance Abuse
- Mental Health

Mentoring

- Mentor Orientation
- Connecting Mentors to Mentees
- Ongoing Recruitment

Family/Children Issues

- Reconnecting With Family
- Family Counseling

Community Outreach

- Reentry Resource Roundtables
- Networking
- Exchanging Knowledge and Resources

Civic Education

- Formerly incarcerated person's Right to Vote
- Engagement in the advocacy and electoral process